

### TTMA Flanged Sight Flow Indicators



Size	Nominal Width	Acrylic Part #
3"	1-3/4"	TT3ASG
4"		TT4ASG
3"		TT3ASG-ETH <sup>1</sup>
4"		TT4ASG-ETH <sup>1</sup>

#### Optically Enhanced Sight Glass

Size	Nominal Width	Acrylic Part #
3"	1-3/4"	TT3ASGOE
4"		TT4ASGOE
3"		TT3ASG-ETHOE <sup>1</sup>
4"		TT4ASG-ETHOE <sup>1</sup>

<sup>1</sup> For use with ethanol

NOTE: For flange dimensions, diagrams and additional information please reference dixonvalve.com.

### Sight Flow Indicator Repair Kits



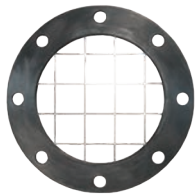
5200-SFIV-RK1

Description	Used on	Part #
3" replacement sight glass, Baylast™ O-ring, and retainer ring kit	---	5200-SFI-3-RK1
3" replacement sight glass, FKM O-ring, and retainer ring kit	---	5200-SFI-3V-RK1
4" replacement sight glass, Baylast O-ring, and retainer ring kit	---	5200-SFI-RK1
4" replacement sight glass, FKM O-ring, and retainer ring kit	---	5200-SFIV-RK1
replacement Baylast O-rings, sight glass and retaining ring	5201-SFI	5201-SFI-RK1
nitrile rubber O-ring	---	O249BU
plexiglass insert	4-1460-AL	4PSG
nitrile rubber O-ring	4-4160-AL	O246BU

### TTMA Flange Screen

#### Material

- Stainless steel screen is encapsulated in an FKM gasket



Male NPT	Description	Stainless Steel Part #
2"	screen with 1" square holes	TTFS4SS

NOTE: For flange dimensions, diagrams and additional information please reference dixonvalve.com.