

### Flange Adapters - Series-FA

**Application**

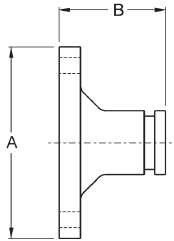
- Used to connect an ANSI Class 125 and 150 flange to a grooved pipe using a grooved clamp

**Feature**

- Provides a rigid one-piece connection that can be disconnected by removing the clamp assembly, assemble to another flange, position bolt heads on the adapter (grooved) side

**Material**

- Ductile iron body with rust inhibiting paint



Nominal Size	Pipe O.D.	Maximum Working Pressure PSI at 70°F (21°C)	Flange Dimensions		Bolts		Ductile Iron Part #
			A	B	Qty	size	
2"	2.375"	300	6"	2-3/8"	4	5/8"	FA20
3"	3.500"	300	7-1/4"	2-3/8"	4	5/8"	FA30
4"	4.500"	300	8-1/2"	2-3/8"	8	5/8"	FA40
6"	6.625"	300	11"	2-9/16"	8	3/4"	FA60
8"	8.625"	300	13-1/4"	3"	8	3/4"	FA80



### Reducing Adapters - Series-RA

**Material**

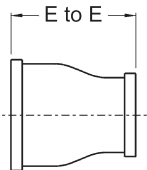
- Ductile iron body with rust inhibiting paint

**Approvals**

- UL listed and Factory Mutual approved

**Comparable to**

- Victaulic's #50
- Grinnell's #7072



Nominal Size	Nominal Size	Dimensions E to E	Ductile Iron Part #
2"	1-1/2"	2.5"	RAGG20150
2-1/2"	2"	2.5"	RAGG25020
3"	2"	2.5"	RAGG3020
	2-1/2"	2.5"	RAGG30250
4"	2"	3.0"	RAGG4020
	2-1/2"	3.0"	RAGG40250
	3"	3.0"	RAGG4030
5"	4"	3.5"	RAGG5040
	2"	4.0"	RAGG6020
6"	2-1/2"	4.0"	RAGG60250
	3"	4.0"	RAGG6030
	4"	4.0"	RAGG6040

P